

**Saving Your Cost Hydraulic Needs**  
**Serving Your Immediate Hydraulic Needs**  
**Quality Piston Pumps & Motors**



**Leading Supplier of Piston Pumps & Motors**



## Axial Piston Fixed Hydraulic Motor/ Pump



**A2FM/A2FE/A2FO--61 Series Axial Piston Fixed Pump/Motors were made in China, with higher quality and competitive Price, also faster delivery Time. All of the function and details mounting Dimension as the same as Original Rexroth Brand.**

**All of the Pump/Motor with 61 type Index..**

### 1、 FINDWAY A2FE/61 Axial Bent Piston Fixed Motor



#### Ordering Code for standard A2FE Size:

Model	Size(NG)						
A2FE/61 Type	45	56	63	80	90	107	125

#### Products Application:

The A2FE/61 series motor use for Implement Hydraulics and Travel Drive system of Mobile Equipment:  
**Wheeled Excavator; Mining Excavator;**  
**Fork Lift Trucks; Harvester;**  
**Materials Handling; Drilling Rigs;**  
**Airport equipment and Rollers.**

**Top Supplier with Cheapest Price in China**

#### Machinery reference:





## 2、 FINDWAY A2FM/61 Axial Bent Piston Fixed Motor



### Ordering Code for standard A2FM Size:

Model	Size(NG)												
A2FM/61 Type	10	12	16	23	28	32	45	56	63	80	90	107	125

**Top Supplier with Cheapest Price in China**

### Products Application:

The A2FM/61 motor use for **Implement Hydraulics** and **Travel Drive** system of Mobile Equipment: **Wheeled Excavator; Mining Excavator; Telehandlers; Fork Lift Trucks; Harvester; Concrete mixers;**

**Materials Handling: Drilling Rigs; Mobile cranes; Airport equipment; Rollers; Crawler cranes; Crushers and screens; Aerial work platforms; Municipal vehicles ; Heavy duty vehicles;**

### Machinery reference:

#### Construction Machinery:



#### Material Handling



### 3、FINDWAY A2FO/61 series Axial Bent Piston Fixed Pump



#### Ordering Code for Standard A2FO Size:

Model	Size(NG)												
A2FO/61 Type	10	12	16	23	28	32	45	56	63	80	90	107	125

**Top Supplier with Cheapest Price in China**

#### Products Application:

The A2FO/61 pump use for Implement Hydraulics and Travel Drive System of Concrete Pumps.

#### Products Application:



### Features of Rexroth A2FM /A2FE/A2FO axial bent Fixed piston

#### hydraulic motor & pump:

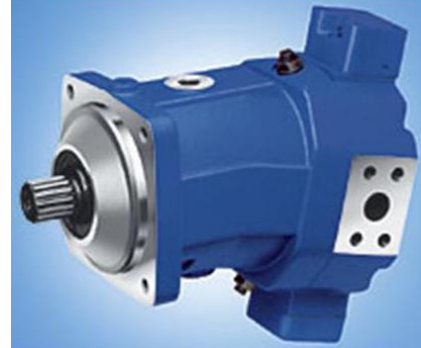
1. Bent axis design with fixed displacement
2. Completely interchangeable with original
3. For use as either pump or motor in hydrostatic drivers, in open of closed circuit
4. High performance rotary group with well-proven spherical control area with the advantages; self-centering low peripheral speed, high efficiency
5. Robust rolling bearings endure long service life
6. Drive shaft capable of adopting radial loading

## Axial Piston Variable Hydraulic Motor

### FINDWAY A6VM/63 series Axial Variable Piston Motor

Ordering Code for Standard A6VM/63 Size:

Model	Size(NG)						
A6VM/63	28	55	80	107	250	355	500



### Products Application:

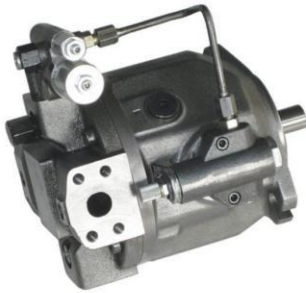
The A6VM/63 Axial Piston Motor use for Implement Hydraulics and Travel Drive System of Mobile Equipment:

Excavators, Wheel Loaders, Backhoe Loaders, Telehandlers, Rollers, Concrete mixers, Dumpers, Combine and forage harvesters, Harvesters, Forwarders, Mobile cranes, Crawler cranes, Municipal vehicles, Airport equipment, Heavy duty vehicles and so on.

### Machinery reference:



## **Axial Piston Variable Hydraulic Pump**



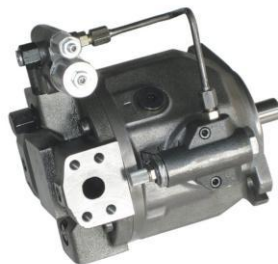
**A10V(S)O 31/32 Series Variable Axial Piston Hydraulic Pump**  
Pump/Motors were made in China, with higher quality and competitive Price, also faster delivery Time. All of the function and details mounting dimension as the same as Original Rexroth Brand.

**All of the Pump with 31 and 32 type Index..**

### **A10V(S)O- 31(32) Series Pump**

#### CHARACTERISTIC:

- 1 Swash plate design axial variable piston pump used in open circuit.
- 2 Continuous work pressures can reach 280bar; the highest instantaneous work pressure can reach 350bar.
- 3 The flow is directly proportional to the drive rotate speed and the displacement, and can make stepless variable come true by adjusting the obliquity of the swash plate.
- 4 There are various of control type such as DR, DFR, DFLR etc. and the control response is very fast.
- 5 Low noises level, High efficiency, High reliability and long time service life.
- 6 Small volume, High power density.
- 7 Excellent oil absorbency.
- 8 Axial and radial loading of drive shaft possible
- 9 SAE and ISO mounting flange





## 1、FINDWAY Open Circuit A10VO 31/32 series Variable Axial Piston Pump



### Ordering Code for standard A10VO Size:

Model	Size(NG)					
A10VO/31 Type	18	28	45	71	100	140

**Top Supplier with Cheapest Price in China**

### Products Application:

The **A10VO** Pumps use for Implement Hydraulics and Travel Drive system of  
**Mobile Equipment:** Wheeled Excavator; Mining Excavator; Compact excavators;  
 Wheeled loaders; Backhoe loaders; Dumpers; Fork Lift Trucks; Pavers and road milling  
 machines; Concrete pumps;

**Agricultural and Forestry Machinery:** Harvesters; Forwarders; Skidders

**Materials Handling:** Mobile cranes; Crawler cranes; Fork lift trucks; Large lift trucks  
 and container handling; Underground and mining machines; Aerial work platforms;

**On- Highway and Commercial Vehicles:** Municipal vehicles; Airport equipment;  
 Heavy duty vehicles.

### Construction Machinery



### Agricultural and Forestry Machinery



### Material Handling



### On- Highway and Commercial Vehicles



## 2、 FINDWAY Opened Circuit A10VSO 31/32 Variable Axial Piston Pump

### Ordering Code for standard A10VSO Size:

Model	Size(NG)					
A10VSO/31 Type	18	28	45	71	100	140



### Products Application:

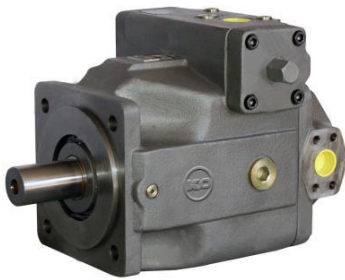
The **A10VSO** pumps use for Industrial Hydraulics and Electro-Hydraulic control Systems:  
 Shearing, Bending and Spinning Machine;  
 Tire Presses Machine; Extrusion Machine;  
 Nibbling Machine and Forming Machine and son...

**Top Supplier with Cheapest Price in China**



### 3、 FINDWAY Closed Circuit A4VG/ 32 series Variable Axial Piston Pump

Ordering Code for standard A4VG/32 Pump Size:



Model	Size(NG)							
A4VG/32 Type	28	40	56	71	90	125	180	250

#### Products Application:

The **A4VG/32** Pumps use for Implement Hydraulics and Travel Drive system of Mobile Equipment:  
Wheeled Excavator; Mining Excavator; Compact excavators; Wheeled loaders; Backhoe Loaders; Telehandlers; Fork Lift Trucks; Harvester; Dumpers;

Materials Handling: Forwarders; Skidders; Crawler cranes; Underground and mining machines; Aerial work platforms; Municipal vehicles; Heavy duty vehicles; Airport equipment; Rollers;

#### Machinery Reference

##### Construction machinery



##### Agricultural and Forestry Machinery



##### Material Handling



#### 4、 FINDWAY Opened Circuit A7VO/ 63 series Variable Axial Piston Pump

Ordering Code for standard A7VO/63 Pump Size:



Model	Size(NG)				
A7VO/63 Type	28	55	80	107	160

#### Products Application:

The A7VO/63 Pumps use for Implement Hydraulics And Travel Drive system of Mobile Equipment:

It is a Heart of Excavators.

Wheeled Excavator; Mining Excavator;

Compact excavators;

#### Machinery Reference



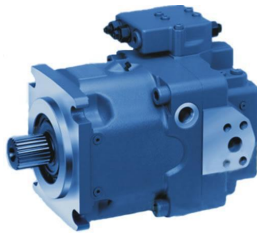
The Findway Piston Pumps/Motors have proven itself in many applications.

These Units widely used for Mobile & Industrial Equipment.

All of the complete units and parts are fit, form and function replacements for Rexroth components.



## 5、FINDWAY Opened Circuit A11VO series Variable Axial Piston Pump



### Ordering Code for standard A11VO series Pump Size:

Model	Size(NG)							
A11VO series	40	60	75	95	130	145	190	260

### Products Application:

The **A11VO** series Pumps use for Excavator, Drilling Rigs, Wheel Loaders, Telehandlers, Concrete Pumps, Dumpers, Forwarders

### Machinery Reference





---

### **VICKERS Opened Circuit PVB series Variable Axial Piston Pump**



**Ordering Code for standard PVB Pump Size:  
PVB5,PVB6,PVB10,PVB15,PVB20,PVB29**

**The PVB series light piston pump has low noise,hi efficiency, small size, light weight and long life. It is widely used in variable industrial Machinery.**

**It can replace with the Vickers PVB series piston pump.**

### **VICKERS PVQ series Variable Piston Pump**

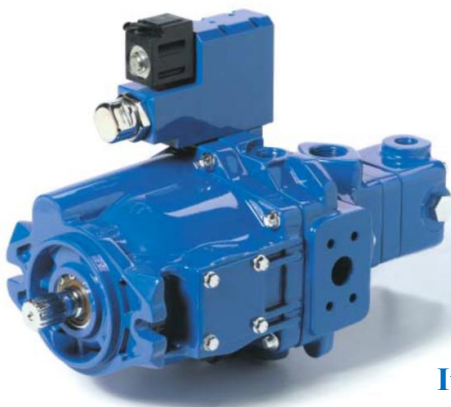


**Ordering Code for standard PVB Pump Size:  
PVQ10,PVQ13,PVQ20,PVQ32**

**The PVQ series piston pump is middle-pressure swash plate type. It has low noise and smooth, widely used for variable industrial machinery.**

**It can replace with the Vickers PVQ series piston pump.**

### **VICKERS PVH series Variable Piston Pump**



**Ordering Code for standard PVB Pump Size:  
PVH57,PVH74,PVH98,PVH131**

**The PVH series piston pump has compact structure, light weight, high efficiency, long life, low noise and variable control way. It is widely used for variable industrial machinery.**

**It can replace with the Vickers PVH series piston pump.**

## Radial Piston Hydraulic Motor

### 1、STAFFA HMB and HMC series Radial Piston Hydraulic Motor



**Ordering Code for standard HMB/HMC Size:**  
B80, B100, B125, B150, B200, B270, B325  
C100, C125, C200, C270, C325

#### **Products Application:**

The STAFFA HMB/HMC series Radial hydraulic Motors use for all kinds of hydraulics transmission Systems. Such as Plastic Injection machine; Deck machine, construction machinery, hoist, Transport Vehicle, Heavy metallurgical machinery, and son on...



### 2、HAGGLUNDS series Radial Piston Hydraulic Motor



**Ordering Code for standard HMB/HMC Size:**  
CA50, CA70, CA100, CA140, CA210  
CB280, CB400, CB560, CB840, CB1120

#### **Products Application:**

The Hagglunds CA/CB series Radial Piston hydraulic motors use for requiring high torque, low speeds and variable speeds. The drive systems are used in a wide range of industries, such as Mining and materials handling, Marine and offshore, Recycling, Sugar, Pulp and paper, Rubber and plastics, and Building and construction.

#### Machinery Reference



### 3、SAI GM series Piston hydraulic Motor



#### Ordering Code for standard GM motor Size:

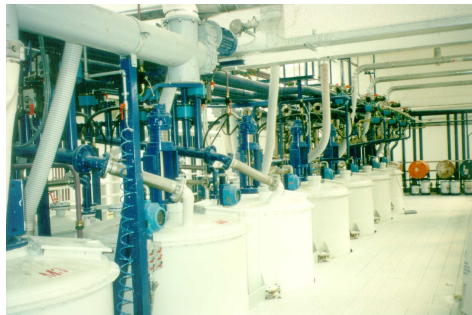
Model	Displacement(ml/r)							
	60	75	110	130	150	170	200	
GM05	60	75	110	130	150	170	200	
GM1	100	150	175	200	250	300	320	
GM2	200	250	300	350	420	500	600	
GM3	350	425	500	600	700	800	900	1000
GM4	400	500	600	800	900	1000	1100	1250
GM5	525	650	800	1000	1200	1300	1450	1600

Top Supplier with Cheapest Price in China

#### Products Application:

The SAI GM series Radial hydraulic Motors use for all kinds of hydraulics transmission Systems. Such as Cement & Stone Crusher, Drilling, Guided Boring Machine, Material Handler, Mixers, Oil Pump, Pipes Conveyor, Power Tong, Rotary Table, Shredder, Slurry & Water Pump, Steel Mill, Windmill, Wire Tensioner, Cable Laying, Capstan, Davit, Dregging, Fish Pump, Hatch Cover, Marine Winch, Off Shore Rig, Ship Transporter, Trenching, also Mobile Machinery, Plastic injection Machinery and son on...

#### Machinery reference:





#### 4、 FINDWAY MCR Radial Piston High Torque Hydraulic Motor

Ordering Code for standard MCR motor Size:



Motor	DISPLACEMENT							
MCR3	160CC	225CC	255CC	280CC	325CC	365CC	400CC	
MCR5	380CC	470CC	520CC	565CC	620CC	680CC	750CC	820CC

**MCR03/MCR05 Application:**

The MCR03/MCR05 series motor is widely used in Road building and road maintenance machinery, Earth moving equipment, Drilling and trenching equipment, Agricultural machinery, Forestry equipment, and so on.

Machinery: Roller, Soil compactor, Road Roller, Break equipment

**MCR3A400A45Z32B2M USED FOR CATERPILLAR 226B SKID STEER LOADER**



**MCR5C820F180Z32B4V1L12F6P0S0428J USED FOR BOBCAT T190,T200 SKID STEER LOADER**



## 5、Poclairn MS Radial Piston High Torque Hydraulic Motor



**Ordering Code for standard MS motor Size:**  
MS05, MS08, MS11, MS18, MS25, MS35



### **MS08/MSE08 Application:**

The MS08/MSE08 series motor is widely used in Road building and road maintenance machinery, Earth moving equipment, Drilling and trenching equipment, Agricultural machinery, Forestry equipment, and so on.

Machinery: Roller, Soil compactor, Road Roller, Break equipment

### **Machinery Reference**

**MS08-9-12A-A08-1120-DEJMO IS USED IN BELL 220A TELELOGGER AND JOHN DEERE FOREST MACHINERY**



### **MS18/MSE18 Application:**

The MS18/MSE18 series motor is widely used in Road building and road maintenance machinery, Earth moving equipment, Drilling and trenching equipment, Agricultural machinery, Forestry equipment, and so on.

Machinery: Roller, Soil compactor, Road Roller, Break equipment

**MS18-2-121-A18-1330-00-MR Used for the Hamm 411 Compactor**



**MSE18-2-A24-F19-1840-5K00 Used for Bomag Pushfiller 211**

**MS18-2-121-F12-1410-0000 Used for Bomag 213-d-2 Compactor**





---

## Parker Axial Piston Variable Pumps PV series



**Ordering Code for standard PV Pumps Size:**  
PV016, PV020, PV023, PV028, PV032, PV040  
PV046, PV063, PV076, PV080, PV092, PV100  
PV140, PV180, PV270, PV360

### Products Application:

The Parker Axial Piston Variable Pumps PV series widely used for Plastic injection machinery, Die-casting machinery, Oil Press machinery, Marine machinery, Mining Machinery, Construction machinery.

---

## VANE PUMPS

### Denison Vane Pumps T6 series



**T6 series Vane Pump----Single pumps**  
**Ordering Code for standard T6 Pumps Size:**  
T6C, T6D, T6E series  
With Full Displacement



**T6 series Vane Pump----Double pumps**  
**Ordering Code for standard T6 Pumps Size:**  
T6CC, T6DC, T6EC, T6ED series  
With Full Displacement

---

### 5、Vickers Vane Pumps V series



**V series Vane Pump**  
**Ordering Code for standard V Pumps Size:**  
20V, 25V, 35V, 45V  
With Full Displacement



**VQ series Vane Pump**  
**Ordering Code for standard V Pumps Size:**  
20VQ, 25VQ, 35VQ, 45VQ  
With Full Displacement



---

## Rexroth Travel Gears Hydraulic GFT series



**Travel Drives GFT Ordering Code:**  
GFT9, GFT13, GFT17, GFT24, GFT26, GFT34  
GFT36, GFT40, GFT50, GFT60, GFT65, GFT80  
GFT110, GFT160, GFT220, GFT330, GFT450

### The Travel Gears Hydraulic GFT series

- 1, For travel drives in tracked and wheeled vehicles
- 2, Also suitable for other rotary motion sequences, e.g. Drum drives, milling drum drives etc.
- 3, Two-, three or four-stage planetary gearbox
- 4, For attachment of fixed or variable motors (A2FM/E, A6VM/E, A10VE)
- 5, Torque output 9500...45000 Nm

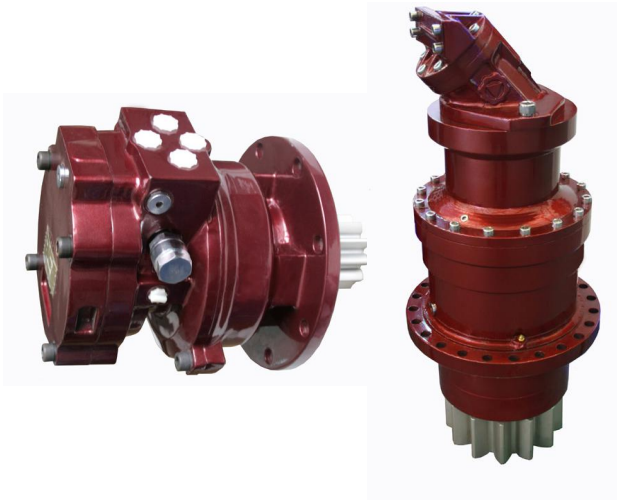
### The Travel Drives GFT series Feature:

- 1, Compact space-saving design
- 2, Integrated multi-disc parking brake
- 3, Low noise operation
- 4, Easy oil change
- 5, Robust main bearing
- 6, Optional at wheel drives: mechanical disconnecting device
- 7, Easy installation



### The Travel Gears Hydraulic GFT with Piston motors

## Hydraulic Transmission Devices



### Hydraulic Transmission Devices

#### Feature:

- Compact, space-saving planetary gearbox design;
- Modular Design;
- Easy installation and repair;
- Planetary frame adopts the structure Design of arm support;
- Double bearing support, operation Stability;
- Low-noise running operation;
- With or without Brake.

#### Details Size of hydraulic transmission devices

Number of Gear Stages	Total Displacement	Rated torque (N.m)	Speed	Total efficiency
	ml/r	20Mpa		
2.5	575	1630	0-100	0.89-0.92
	645	1826		
	755	2136		
	830	2350		
	955	2706		
	1050.5	2976		

Number of Gear Stages	Total Displacement	Rated torque (N.m)	Speed	Total efficiency
	ml/r	20Mpa		
3.0	1215	3382	0-90	0.89-0.92
	1450	4022		
	1570	4361		
	1735	4823		
	1908	5306		
	2338	6492		

Number of Gear Stages	Total Displacement	Rated torque (N.m)	Speed	Total efficiency
	ml/r	20Mpa		
4.0	2430	6860	0-80	0.91-0.92
	2975	8398		
	3450	9774		
	3960	11222		
	4356	12344		
	4801	13538		

The Gear Stages Rated can be choice: 2.5, 3.0, 4.0, 5.0, 6.0, 2.53, 34, 45, 56

The displacement range: 550---28000 ml/r

The Rated Torque: 3400---63000 N.m